



ACP (EXCL SOUTH AFRICA)
EU BILATERAL TRADE AND TRADE WITH THE WORLD



21-Mar-12
DG TRADE

TOTAL MERCHANDISE TRADE, 2007-2011

1. Evolution of the EU's Trade Balance with Acp (Excl South Africa)
2. Evolution of the ACP (excl South Africa)'s Trade Balance

GEOGRAPHIC BREAKDOWN OF TRADE, 2011

3. EU Trade with Main Partners
4. ACP (excl South Africa)'s Trade with Main Partners

SECTORAL BREAKDOWN OF TRADE

SITC Rev.3 & AMA/NAMA Product Groups

5. European Union, Trade with the World and Acp (Excl South Africa), by Sitc Section
6. European Union Imports, by Product Grouping
7. European Union Exports, by Product Grouping
8. Rank of ACP (excl South Africa) in European Union Trade

Harmonized System, Sections

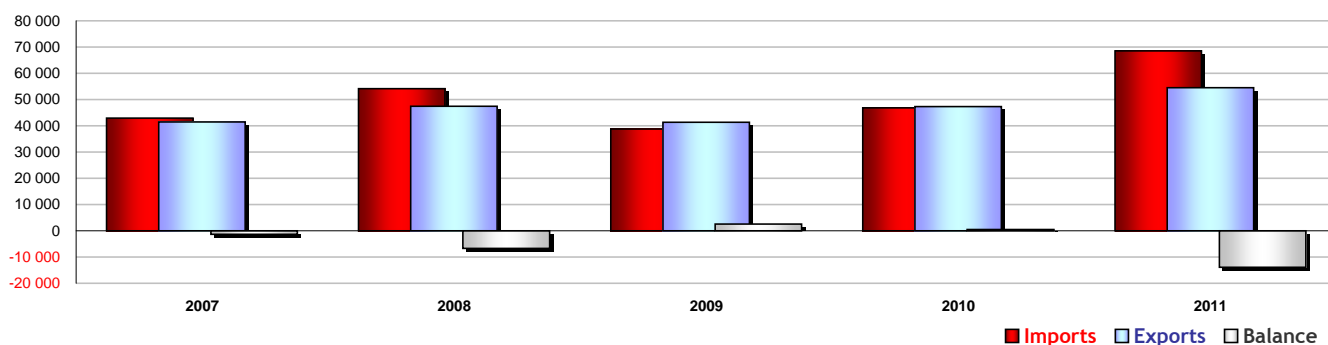
9. EU Trade with the World and EU Trade with Acp (Excl South Africa) (2011)

EU'S TRADE BALANCE WITH ACP (EXCL SOUTH AFRICA)

European Union, Trade with ACP (excl South Africa)

millions of euro, %

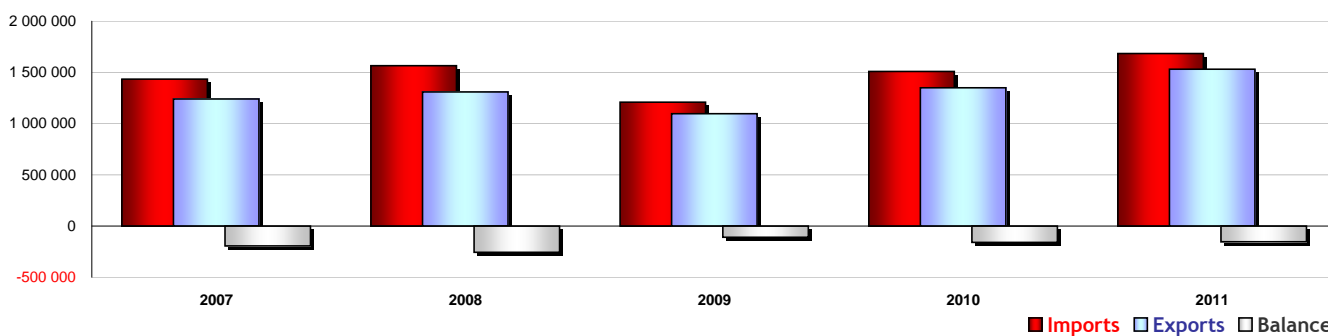
Period	Imports	Variation (%, y-o-y)	Share of total EU Imports (%)	Exports	Variation (%, y-o-y)	Share of total EU Exports (%)	Balance	Trade
2007	42 875	3,0	3,0	41 476	15,1	3,3	-1 399	84 351
2008	54 133	26,3	3,5	47 398	14,3	3,6	-6 735	101 532
2009	38 720	-28,5	3,2	41 339	-12,8	3,8	2 619	80 059
2010	46 827	20,9	3,1	47 322	14,5	3,5	495	94 148
2011	68 504	46,3	4,1	54 558	15,3	3,6	-13 946	123 062
2011Q1	15 620	-	3,7	12 694	-	3,5	-2 926	28 314
2011Q2	16 636	-	4,0	13 500	-	3,6	-3 136	30 135
2011Q3	18 649	-	4,4	13 999	-	3,6	-4 651	32 648
2011Q4	17 599	-	4,2	14 366	-	3,6	-3 234	31 965
2012Q1	-	-	-	-	-	-	-	-
2012Q2	-	-	-	-	-	-	-	-
2012Q3	-	-	-	-	-	-	-	-
2012Q4	-	-	-	-	-	-	-	-
Average annual growth (2007-2011)		12,4			7,1			9,9



European Union, Trade with the World

millions of euro, %

Period	Imports	Variation (%, y-o-y)		Exports	Variation (%, y-o-y)		Balance	Trade
2007	1 435 083	6,1		1 240 984	7,0		-194 099	2 676 067
2008	1 566 379	9,1		1 309 218	5,5		-257 161	2 875 597
2009	1 207 814	-22,9		1 098 066	-16,1		-109 748	2 305 880
2010	1 509 092	24,9		1 349 610	22,9		-159 482	2 858 702
2011	1 683 931	11,6		1 531 122	13,4		-152 809	3 215 053
2011Q1	419 185	-		366 024	-		-53 161	785 210
2011Q2	420 281	-		377 464	-		-42 816	797 745
2011Q3	423 142	-		383 708	-		-39 434	806 850
2011Q4	421 323	-		403 926	-		-17 398	825 249
2012Q1	-	-		-	-		-	-
2012Q2	-	-		-	-		-	-
2012Q3	-	-		-	-		-	-
2012Q4	-	-		-	-		-	-
Average annual growth (2007-2011)		4,1			5,4			4,7



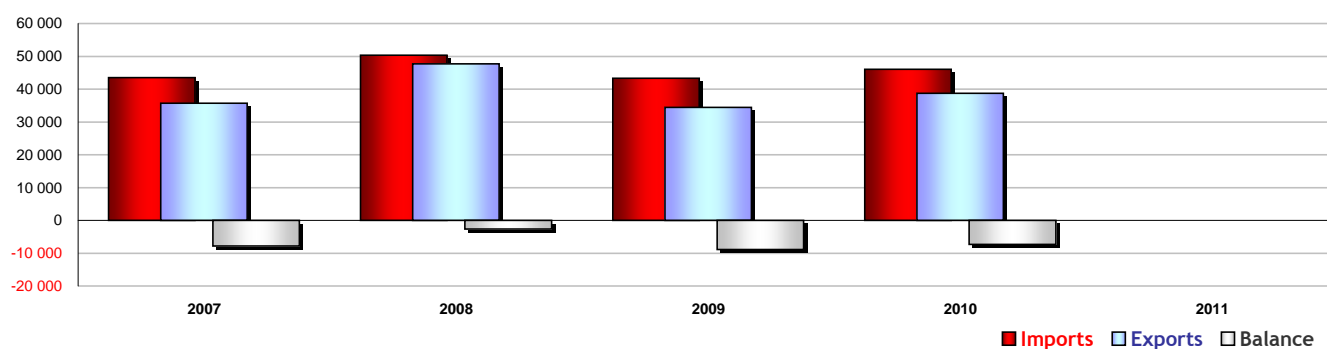
ACP (excl South Africa): Angola, Antigua and Barbuda, Bahamas, Barbados, Belize, Benin, Botswana, Burkina Faso, Burundi, Cameroon, Cape Verde, Central African Republic, Chad, Comoros, Congo, Congo (Dem. Rep.), Cook Islands, Côte d'Ivoire, Cuba, Djibouti, Dominica, Dominican Republic, Equatorial Guinea, Eritrea, Ethiopia, Fiji, Gabon, Gambia, Ghana, Grenada, Guinea, Guinea-Bissau, Guyana, Haiti, Jamaica, Kenya, Kiribati, Lesotho, Liberia, Madagascar, Malawi, Mali, Marshall Islands, Mauritania, Mauritius, Federated States of Micronesia, Mozambique, Namibia, Nauru, Niger, Nigeria, Niue, Palau, Papua New Guinea, Rwanda, São Tomé & Príncipe, Senegal, Seychelles, Sierra Leone, Solomon Islands, Somalia, St Kitts and Nevis, St Lucia, St Vincent & Grenadines, Sudan, Suriname, Swaziland, Tanzania, Timor-Leste, Togo, Tonga, Trinidad & Tobago, Tuvalu, Uganda, Vanuatu, Western Samoa, Zambia, Zimbabwe

ACP (EXCL SOUTH AFRICA)'S TRADE BALANCE

ACP (EXCL SOUTH AFRICA), Trade with the European Union

millions of euro, %

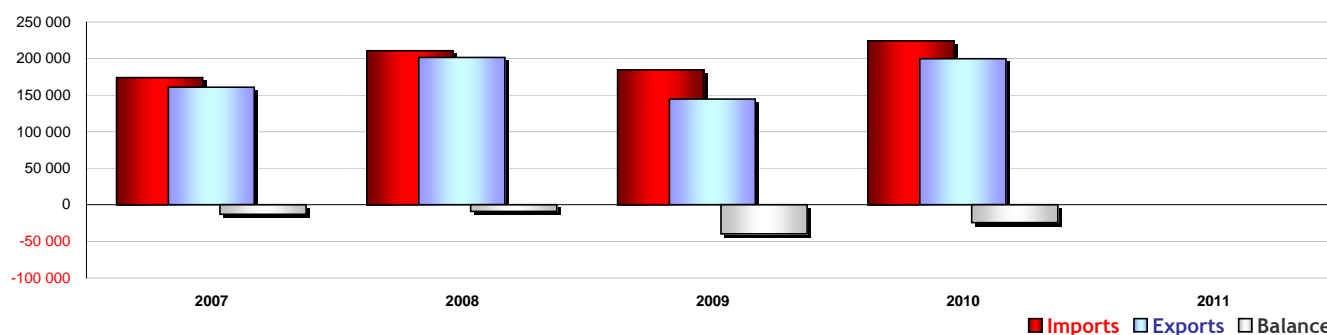
Period	Imports	Variation (%, y-o-y)	EU Share of total Imports (%)	Exports	Variation (%, y-o-y)	EU Share of total Exports (%)	Balance	Trade
2007	43 531	12,9	25,1	35 748	3,2	22,2	-7 782	79 279
2008	50 310	15,6	23,9	47 701	33,4	23,7	-2 608	98 011
2009	43 309	-13,9	23,5	34 398	-27,9	23,8	-8 911	77 708
2010	46 018	6,3	20,5	38 730	12,6	19,4	-7 287	84 748
2011	-	-	-	-	-	-	-	-
2011Q1	11 724	-	20,2	12 886	-	22,5	1 162	24 609
2011Q2	12 540	-	20,2	13 409	-	22,8	869	25 949
2011Q3	-	-	-	-	-	-	-	-
2011Q4	-	-	-	-	-	-	-	-
2012Q1	-	-	-	-	-	-	-	-
2012Q2	-	-	-	-	-	-	-	-
2012Q3	-	-	-	-	-	-	-	-
2012Q4	-	-	-	-	-	-	-	-
Average annual growth (2007-2011)	-	-	-	-	-	-	-	-



ACP (EXCL SOUTH AFRICA), Trade with the World

millions of euro, %

Period	Imports	Variation (%, y-o-y)		Exports	Variation (%, y-o-y)		Balance	Trade
2007	173 759	11,8		160 738	6,6		-13 021	334 497
2008	210 502	21,1		201 654	25,5		-8 849	412 156
2009	184 354	-12,4		144 754	-28,2		-39 600	329 107
2010	224 045	21,5		199 684	37,9		-24 361	423 729
2011	-	-		-	-		-	-
2011Q1	58 163	-		57 199	-		-964	115 363
2011Q2	61 974	-		58 752	-		-3 222	120 726
2011Q3	-	-		-	-		-	-
2011Q4	-	-		-	-		-	-
2012Q1	-	-		-	-		-	-
2012Q2	-	-		-	-		-	-
2012Q3	-	-		-	-		-	-
2012Q4	-	-		-	-		-	-
Average annual growth (2007-2011)	-	-		-	-		-	-



ACP (excl South Africa): Angola, Antigua and Barbuda, Bahamas, Barbados, Belize, Benin, Botswana, Burkina Faso, Burundi, Cameroon, Cape Verde, Central African Republic, Chad, Comoros, Congo, Congo (Dem. Rep.), Cook Islands, Côte d'Ivoire, Cuba, Djibouti, Dominica, Dominican Republic, Equatorial Guinea, Eritrea, Ethiopia, Fiji, Gabon, Gambia, Ghana, Grenada, Guinea, Guinea-Bissau, Guyana, Haiti, Jamaica, Kenya, Kiribati, Lesotho, Liberia, Madagascar, Malawi, Mali, Marshall Islands, Mauritania, Mauritius, Federated States of Micronesia, Mozambique, Namibia, Nauru, Niger, Nigeria, Niue, Palau, Papua New Guinea, Rwanda, São Tomé & Príncipe, Senegal, Seychelles, Sierra Leone, Solomon Islands, Somalia, St Kitts and Nevis, St Lucia, St Vincent & Grenadines, Sudan, Suriname, Swaziland, Tanzania, Timor-Leste, Togo, Tonga, Trinidad & Tobago, Tuvalu, Uganda, Vanuatu, Western Samoa, Zambia, Zimbabwe

EU TRADE WITH MAIN PARTNERS (2011)

The Major Imports Partners

Rk	Partners	Mio euro	%
Extra EU27		1 683 931,0	100,0%
1	China	292 070,9	17,3%
2	Russia	198 178,2	11,8%
3	United States	184 141,2	10,9%
4	Norway	93 528,7	5,6%
5	Switzerland	91 204,1	5,4%
6	Japan	67 444,8	4,0%
7	Turkey	47 588,4	2,8%
8	India	39 256,9	2,3%
9	Brazil	37 751,6	2,2%
10	South Korea	36 057,0	2,1%
11	Saudi Arabia	27 933,3	1,7%
12	Algeria	27 534,4	1,6%
13	Nigeria	24 190,0	1,4%
14	Taiwan	23 917,1	1,4%
15	Canada	22 852,4	1,4%
16	Kazakhstan	22 672,7	1,3%
17	Malaysia	20 988,0	1,2%
18	Singapore	18 937,5	1,1%
19	South Africa	17 774,0	1,1%
20	Thailand	17 534,2	1,0%
21	Mexico	16 269,1	1,0%
22	Indonesia	16 152,5	1,0%
23	Iran	15 887,6	0,9%
24	Ukraine	14 975,3	0,9%
25	Azerbaijan	14 785,5	0,9%
26	Qatar	13 299,6	0,8%
27	Vietnam	12 800,3	0,8%
28	Israel	12 640,3	0,8%
29	Australia	11 754,8	0,7%
30	Chile	10 866,8	0,6%
31	Argentina	10 659,9	0,6%
32	Libya	10 406,0	0,6%
33	Hong Kong	10 132,8	0,6%
34	Tunisia	9 869,2	0,6%
35	Iraq	9 469,6	0,6%
36	Egypt	9 422,3	0,6%
37	United Arab Emirates	8 770,1	0,5%
38	Morocco	8 685,3	0,5%
39	Bangladesh	8 584,9	0,5%
40	Colombia	6 897,5	0,4%
41	Angola	6 651,3	0,4%
42	Peru	6 339,3	0,4%
43	Costa Rica	5 986,9	0,4%
44	Croatia	5 604,1	0,3%
45	Philippines	5 091,0	0,3%
46	Kuwait	4 791,7	0,3%
47	Serbia	4 716,0	0,3%
48	Pakistan	4 565,9	0,3%
49	Belarus	4 219,4	0,3%
50	Equatorial Guinea	4 116,3	0,2%
-	ACP (excl South)	68 503,9	4,1%

The Major Exports Partners

Rk	Partners	Mio euro	%
Extra EU27		1 531 122,0	100,0%
1	United States	260 566,8	17,0%
2	China	136 216,9	8,9%
3	Switzerland	121 690,6	7,9%
4	Russia	108 448,9	7,1%
5	Turkey	72 587,6	4,7%
6	Japan	48 970,3	3,2%
7	Norway	46 531,0	3,0%
8	India	40 419,4	2,6%
9	Brazil	35 729,7	2,3%
10	United Arab Emirates	32 614,2	2,1%
11	South Korea	32 418,5	2,1%
12	Australia	30 804,9	2,0%
13	Hong Kong	30 189,6	2,0%
14	Canada	29 607,2	1,9%
15	Singapore	27 131,3	1,8%
16	Saudi Arabia	26 395,5	1,7%
17	South Africa	25 639,0	1,7%
18	Mexico	23 802,6	1,6%
19	Ukraine	21 197,0	1,4%
20	Algeria	17 204,7	1,1%
21	Israel	16 835,9	1,1%
22	Taiwan	16 207,1	1,1%
23	Morocco	15 168,0	1,0%
24	Egypt	13 904,4	0,9%
25	Nigeria	12 501,0	0,8%
26	Malaysia	11 915,0	0,8%
27	Thailand	11 859,3	0,8%
28	Croatia	11 300,9	0,7%
29	Tunisia	10 928,9	0,7%
30	Iran	10 488,9	0,7%
31	Serbia	8 486,6	0,6%
32	Argentina	8 322,1	0,5%
33	Gibraltar	7 836,2	0,5%
34	Chile	7 651,4	0,5%
35	Indonesia	7 349,9	0,5%
36	Belarus	7 218,0	0,5%
37	Kazakhstan	5 999,8	0,4%
38	Lebanon	5 236,2	0,3%
39	Vietnam	5 209,1	0,3%
40	Colombia	4 986,1	0,3%
41	Qatar	4 885,5	0,3%
42	Venezuela	4 879,9	0,3%
43	Angola	4 853,5	0,3%
44	Philippines	3 978,8	0,3%
45	Iraq	3 883,6	0,3%
46	Pakistan	3 740,7	0,2%
47	Kuwait	3 706,8	0,2%
48	Bosnia-Herzegovina	3 535,1	0,2%
49	New Zealand	3 463,6	0,2%
50	Jordan	3 250,3	0,2%
-	ACP (excl South)	54 558,0	3,6%

The Major Trade Partners

Rk	Partners	Mio euro	%
Extra EU27		3 215 053,0	100,0%
1	United States	444 708,0	13,8%
2	China	428 287,8	13,3%
3	Russia	306 627,1	9,5%
4	Switzerland	212 894,7	6,6%
5	Norway	140 059,6	4,4%
6	Turkey	120 176,0	3,7%
7	Japan	116 415,1	3,6%
8	India	79 676,2	2,5%
9	Brazil	73 481,3	2,3%
10	South Korea	68 475,6	2,1%
11	Saudi Arabia	54 328,8	1,7%
12	Canada	52 459,6	1,6%
13	Singapore	46 068,8	1,4%
14	Algeria	44 739,0	1,4%
15	South Africa	43 412,9	1,4%
16	Australia	42 559,7	1,3%
17	United Arab Emirates	41 384,3	1,3%
18	Hong Kong	40 322,4	1,3%
19	Taiwan	40 124,2	1,2%
20	Mexico	40 071,8	1,2%
21	Nigeria	36 691,1	1,1%
22	Ukraine	36 172,3	1,1%
23	Malaysia	32 903,0	1,0%
24	Israel	29 476,2	0,9%
25	Thailand	29 393,5	0,9%
26	Kazakhstan	28 672,5	0,9%
27	Iran	26 376,5	0,8%
28	Morocco	23 853,3	0,7%
29	Indonesia	23 502,4	0,7%
30	Egypt	23 326,7	0,7%
31	Tunisia	20 798,0	0,6%
32	Argentina	18 982,1	0,6%
33	Chile	18 518,2	0,6%
34	Qatar	18 185,0	0,6%
35	Vietnam	18 009,4	0,6%
36	Azerbaijan	17 647,9	0,5%
37	Croatia	16 905,0	0,5%
38	Iraq	13 353,2	0,4%
39	Serbia	13 202,6	0,4%
40	Libya	12 472,2	0,4%
41	Colombia	11 883,6	0,4%
42	Angola	11 504,7	0,4%
43	Belarus	11 437,4	0,4%
44	Bangladesh	10 286,6	0,3%
45	Peru	9 148,0	0,3%
46	Philippines	9 069,8	0,3%
47	Venezuela	8 966,2	0,3%
48	Kuwait	8 498,5	0,3%
49	Pakistan	8 306,6	0,3%
50	Gibraltar	8 053,7	0,3%
-	ACP (excl South)	123 061,9	3,8%

EU Imports from ...

Partner regions	Mio euro	%
ACP	86 277,8	5,1%
Andean Community	15 906,9	0,9%
ASEAN	93 203,4	5,5%
BRIC	567 257,6	33,7%
CACM	8 274,5	0,5%
Candidate Countries	55 324,2	3,3%
CIS	257 570,0	15,3%
EFTA	188 650,8	11,2%
Latin American Coun	106 354,4	6,3%
MEDA (excl EU and T	71 958,9	4,3%
Mercosur	50 950,8	3,0%
NAFTA	223 262,7	13,3%

EU Exports to ...

Partner regions	Mio euro	%
ACP	80 197,0	5,2%
Andean Community	9 652,0	0,6%
ASEAN	68 458,5	4,5%
BRIC	320 814,8	21,0%
CACM	4 335,2	0,3%
Candidate Countries	86 723,0	5,7%
CIS	152 602,0	10,0%
EFTA	171 141,9	11,2%
Latin American Coun	96 141,4	6,3%
MEDA (excl EU and T	85 634,8	5,6%
Mercosur	45 820,2	3,0%
NAFTA	313 976,6	20,5%

Imports + Exports

Partner regions	Mio euro	%
ACP	166 474,8	5,2%
Andean Community	25 558,9	0,8%
ASEAN	161 661,9	5,0%
BRIC	888 072,4	27,6%
CACM	12 609,7	0,4%
Candidate Countries	142 047,2	4,4%
CIS	410 172,0	12,8%
EFTA	359 792,7	11,2%
Latin American Coun	202 495,9	6,3%
MEDA (excl EU and T	157 593,7	4,9%
Mercosur	96 771,0	3,0%
NAFTA	537 239,3	16,7%

EFTA: Iceland, Liechtenstein, Norway, Switzerland; Candidates: Croatia, FYR of Macedonia, Turkey; Andean Community: Bolivia, Colombia, Ecuador, Peru; CIS: Armenia, Azerbaijan, Belarus, Georgia, Kyrgyzstan, Kazakhstan, Moldova Republic of, Russian Federation, Tajikistan, Turkmenistan, Ukraine, Uzbekistan; CACM: Honduras, El Salvador, Nicaragua, Costa Rica, Guatemala, Panama; Mercosur: Argentina, Brazil, Paraguay, Uruguay; NAFTA: Canada, Mexico, United States; Latin America Countries: CACM, Mercosur, ANCOM, Chile, Cuba, Dominican Republic, Haiti, Mexico, Panama, Venezuela; BRIC: Brazil, Russia, India, China; ASEAN: Brunei Darussalam, Indonesia, Cambodia, Lao People's Democratic Republic, Myanmar, Malaysia, Philippines, Singapore, Thailand, Vietnam; ACP: 79 countries; MEDA (excl EU & Turkey): Algeria, Egypt, Israel, Jordan, Lebanon, Morocco, Occupied Palestinian Territory, Syrian Arab Republic, Tunisia.

ACP (EXCL SOUTH AFRICA)'S TRADE WITH MAIN PARTNERS (2010)

The Major Imports Partners

Rk	Partners	Mio euro	%
	World (all countries)	224 045,2	100,0%
1	EU27	46 017,7	20,5%
2	China	29 321,8	13,1%
3	United States	22 659,8	10,1%
4	India	10 531,5	4,7%
5	South Africa	9 968,7	4,4%
6	South Korea	7 932,4	3,5%
7	Brazil	6 677,1	3,0%
8	Japan	6 154,4	2,7%
9	Singapore	5 509,6	2,5%
10	Venezuela	4 841,1	2,2%
11	Nigeria	3 657,1	1,6%
12	United Arab Emirates	3 482,7	1,6%
13	Thailand	3 062,2	1,4%
14	Saudi Arabia	3 009,9	1,3%
15	Ivory Coast	2 901,1	1,3%
16	Australia	2 789,9	1,2%
17	Canada	2 293,6	1,0%
18	Trinidad and Tobago	2 191,1	1,0%
19	Malaysia	2 017,8	0,9%
20	Turkey	1 643,9	0,7%
21	Indonesia	1 599,1	0,7%
22	Kenya	1 578,6	0,7%
23	Russia	1 381,7	0,6%
24	Mexico	1 292,7	0,6%
25	Egypt	1 274,1	0,6%
26	Colombia	1 184,7	0,5%
27	Dominican Republic	1 116,4	0,5%
28	Congo, Democratic	999,3	0,4%
29	Netherlands Antilles	996,9	0,4%
30	Pakistan	957,0	0,4%
31	New Zealand	948,3	0,4%
32	Norway	906,5	0,4%
33	Switzerland	856,1	0,4%
34	Ukraine	840,1	0,4%
35	Hong Kong	839,0	0,4%
36	Senegal	813,0	0,4%
37	Argentina	791,4	0,4%
38	Bahrain	754,6	0,3%
39	Uganda	716,4	0,3%
40	Vietnam	673,4	0,3%
41	Morocco	610,9	0,3%
42	Kuwait	578,7	0,3%
43	Israel	549,4	0,2%
44	Zambia	549,3	0,2%
45	Cameroon	514,5	0,2%
46	Ghana	437,4	0,2%
47	Tanzania	364,0	0,2%
48	Costa Rica	340,4	0,2%
49	Gabon	337,4	0,2%
50	Togo	332,1	0,1%

The Major Export Partners

Rk	Partners	Mio euro	%
	World (all countries)	199 683,8	100,0%
1	United States	48 901,1	24,5%
2	EU27	38 730,3	19,4%
3	China	31 244,2	15,6%
4	India	13 254,4	6,6%
5	Brazil	5 826,4	2,9%
6	Canada	4 968,6	2,5%
7	South Africa	4 850,4	2,4%
8	Switzerland	3 440,9	1,7%
9	Australia	3 361,2	1,7%
10	Japan	3 030,3	1,5%
11	Ghana	1 910,5	1,0%
12	South Korea	1 760,7	0,9%
13	Ivory Coast	1 618,7	0,8%
14	Malaysia	1 196,3	0,6%
15	Nigeria	1 052,4	0,5%
16	Indonesia	1 030,5	0,5%
17	United Arab Emirates	1 002,3	0,5%
18	Cameroon	981,3	0,5%
19	Zambia	975,5	0,5%
20	Haiti	944,3	0,5%
21	Congo, Democratic	915,7	0,5%
22	Turkey	812,8	0,4%
23	Peru	699,6	0,4%
24	Mali	686,9	0,3%
25	Jamaica	684,3	0,3%
26	Russia	652,1	0,3%
27	Mexico	633,4	0,3%
28	Chile	579,3	0,3%
29	Burkina Faso	559,3	0,3%
30	Trinidad and Tobago	554,2	0,3%
31	Singapore	551,2	0,3%
32	Thailand	521,7	0,3%
33	Dominican Republic	495,4	0,2%
34	Barbados	478,2	0,2%
35	Ukraine	462,9	0,2%
36	Uganda	456,8	0,2%
37	Tanzania	446,1	0,2%
38	Senegal	417,7	0,2%
39	Uruguay	381,9	0,2%
40	Argentina	373,1	0,2%
41	Guyana	370,3	0,2%
42	Kenya	356,8	0,2%
43	Benin	350,0	0,2%
44	Sudan	341,8	0,2%
45	Somalia	340,9	0,2%
46	Egypt	320,8	0,2%
47	Rwanda	314,5	0,2%
48	Colombia	301,8	0,2%
49	Morocco	300,7	0,2%
50	Saudi Arabia	271,9	0,1%

The Major Trade Partners

Rk	Partners	Mio euro	%
	World (all countries)	423 729,0	100,0%
1	EU27	84 747,9	20,0%
2	United States	71 560,8	16,9%
3	China	60 566,0	14,3%
4	India	23 785,9	5,6%
5	South Africa	14 819,1	3,5%
6	Brazil	12 503,6	3,0%
7	South Korea	9 693,1	2,3%
8	Japan	9 184,7	2,2%
9	Canada	7 262,2	1,7%
10	Australia	6 151,1	1,5%
11	Singapore	6 060,8	1,4%
12	Venezuela	5 074,7	1,2%
13	Nigeria	4 709,5	1,1%
14	Ivory Coast	4 519,8	1,1%
15	United Arab Emirates	4 485,0	1,1%
16	Switzerland	4 297,0	1,0%
17	Thailand	3 583,9	0,8%
18	Saudi Arabia	3 281,8	0,8%
19	Malaysia	3 214,1	0,8%
20	Trinidad and Tobago	2 745,3	0,6%
21	Indonesia	2 629,6	0,6%
22	Turkey	2 456,7	0,6%
23	Ghana	2 347,9	0,6%
24	Russia	2 033,8	0,5%
25	Kenya	1 935,5	0,5%
26	Mexico	1 926,1	0,5%
27	Congo, Democratic	1 915,0	0,5%
28	Dominican Republic	1 611,8	0,4%
29	Egypt	1 594,9	0,4%
30	Zambia	1 524,7	0,4%
31	Cameroon	1 495,8	0,4%
32	Colombia	1 486,5	0,4%
33	Ukraine	1 303,0	0,3%
34	Senegal	1 230,7	0,3%
35	Pakistan	1 189,9	0,3%
36	Uganda	1 173,2	0,3%
37	Argentina	1 164,5	0,3%
38	Norway	1 138,5	0,3%
39	Netherlands Antilles	1 095,1	0,3%
40	Hong Kong	1 054,2	0,2%
41	New Zealand	1 009,9	0,2%
42	Haiti	959,8	0,2%
43	Morocco	911,6	0,2%
44	Peru	895,3	0,2%
45	Vietnam	826,1	0,2%
46	Tanzania	810,1	0,2%
47	Bahrain	773,5	0,2%
48	Chile	769,4	0,2%
49	Jamaica	761,5	0,2%
50	Mali	703,3	0,2%

ACP (excl South Africa)'s Imports from ...

Partner regions	Mio euro	%
ACP	30 929,9	13,8%
Andean Community	1 491,4	0,7%
ASEAN	13 023,3	5,8%
BRIC	47 912,1	21,4%
CACM	897,1	0,4%
Candidate Countries	1 827,3	0,8%
CIS	2 436,1	1,1%
EFTA	1 835,7	0,8%
Latin American Countries	16 419,8	7,3%
MEDA (excl EU and T)	3 404,0	1,5%
Mercosur	7 707,3	3,4%
NAFTA	26 246,1	11,7%

ACP (excl South Africa)'s Exports to ...

Partner regions	Mio euro	%
ACP	24 268,0	12,2%
Andean Community	1 250,3	0,6%
ASEAN	3 696,2	1,9%
BRIC	50 977,2	25,5%
CACM	471,9	0,2%
Candidate Countries	833,2	0,4%
CIS	1 278,1	0,6%
EFTA	3 704,3	1,9%
Latin American Countries	9 753,9	4,9%
MEDA (excl EU and T)	1 081,2	0,5%
Mercosur	6 585,4	3,3%
NAFTA	54 503,1	27,3%

ACP (excl South Africa)'s Trade with...

Partner regions	Mio euro	%
ACP	55 197,9	13,0%
Andean Community	2 741,8	0,6%
ASEAN	16 719,5	3,9%
BRIC	98 889,3	23,3%
CACM	1 369,0	0,3%
Candidate Countries	2 660,4	0,6%
CIS	3 714,2	0,9%
EFTA	5 540,0	1,3%
Latin American Countries	26 173,6	6,2%
MEDA (excl EU and T)	4 485,2	1,1%
Mercosur	14 292,7	3,4%
NAFTA	80 749,1	19,1%

EFTA: Iceland, Liechtenstein, Norway, Switzerland; Candidates: Croatia, FYR of Macedonia, Turkey; Andean Community: Bolivia, Colombia, Ecuador, Peru; CIS: Armenia, Azerbaijan, Belarus, Georgia, Kyrgyzstan, Kazakhstan, Moldova Republic of, Russian Federation, Tajikistan, Turkmenistan, Ukraine, Uzbekistan; CACM: Honduras, El Salvador, Nicaragua, Costa Rica, Guatemala, Panama; Mercosur: Argentina, Brazil, Paraguay, Uruguay; NAFTA: Canada, Mexico, United States; Latin American Countries: CACM, Mercosur, ANCOM, Chile, Cuba, Dominican Republic, Haiti, Mexico, Panama, Venezuela; BRIC: Brazil, Russia, India, China; ASEAN: Brunei Darussalam, Indonesia, Cambodia, Lao People's Democratic Republic, Myanmar, Malaysia, Philippines, Singapore, Thailand, Vietnam; ACP: 79 countries; MEDA (excl EU & Turkey): Algeria, Egypt, Israel, Jordan, Lebanon, Morocco, Occupied Palestinian Territory, Syrian Arab Republic, Tunisia.

EUROPEAN UNION, TRADE WITH THE WORLD AND ACP (EXCL SOUTH AFRICA), BY SITC SECTION (2011)*

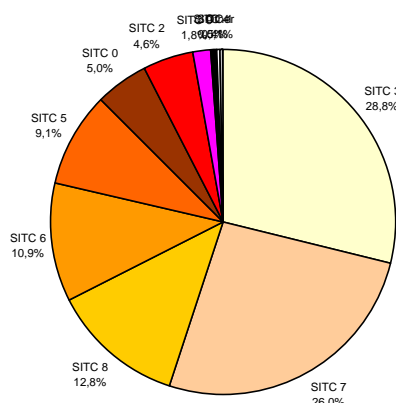
European Union, Imports from the World

SITC Codes	SITC Sections	Value (millions of euro)	Share of Total (%)
TOTAL		1 683 931	100,0%
SITC 3	Mineral fuels, lubricants and related materials	485 445	28,8%
SITC 7	Machinery and transport equipment	438 645	26,0%
SITC 8	Miscellaneous manufactured articles	214 871	12,8%
SITC 6	Manufactured goods classified chiefly by material	183 699	10,9%
SITC 5	Chemicals and related prod, n.e.s.	152 490	9,1%
SITC 0	Food and live animals	83 827	5,0%
SITC 2	Crude materials, inedible, except fuels	76 944	4,6%
SITC 9	Commodities and transactions n.c.e.	30 003	1,8%
SITC 4	Animal and vegetable oils, fats and waxes	8 596	0,5%
SITC 1	Beverages and tobacco	7 061	0,4%

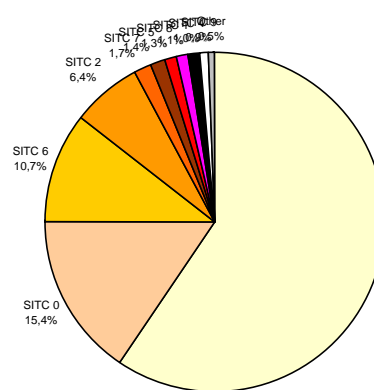
European Union, Imports from... Acp (Excl South Africa)

SITC Codes	SITC Sections	Value (Millions of euro)	Share of Total (%)	Share of total EU Imports
TOTAL		68 504	100,0%	4,1%
SITC 3	Mineral fuels, lubricants and related materials	40 799	59,6%	8,4%
SITC 0	Food and live animals	10 546	15,4%	12,6%
SITC 6	Manufactured goods classified chiefly by material	7 331	10,7%	4,0%
SITC 2	Crude materials, inedible, except fuels	4 408	6,4%	5,7%
SITC 7	Machinery and transport equipment	1 171	1,7%	0,3%
SITC 5	Chemicals and related prod, n.e.s.	956	1,4%	0,6%
SITC 8	Miscellaneous manufactured articles	883	1,3%	0,4%
SITC 1	Beverages and tobacco	769	1,1%	10,9%
SITC 4	Animal and vegetable oils, fats and waxes	663	1,0%	7,7%
SITC 9	Commodities and transactions n.c.e.	602	0,9%	2,0%

European Union, Imports from the World



European Union, Imports from... Acp (Excl South Africa)



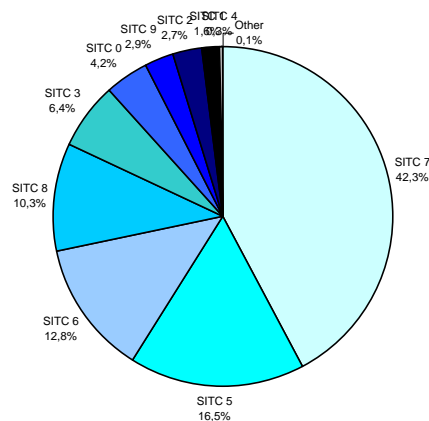
European Union, Exports to the World

SITC Codes	SITC Sections	Value (millions of euro)	Share of Total (%)
TOTAL		1 531 122	100,0%
SITC 7	Machinery and transport equipment	647 511	42,3%
SITC 5	Chemicals and related prod, n.e.s.	253 037	16,5%
SITC 6	Manufactured goods classified chiefly by material	195 760	12,8%
SITC 8	Miscellaneous manufactured articles	157 631	10,3%
SITC 3	Mineral fuels, lubricants and related materials	98 650	6,4%
SITC 0	Food and live animals	63 726	4,2%
SITC 9	Commodities and transactions n.c.e.	43 679	2,9%
SITC 2	Crude materials, inedible, except fuels	40 920	2,7%
SITC 1	Beverages and tobacco	25 107	1,6%
SITC 4	Animal and vegetable oils, fats and waxes	3 874	0,3%

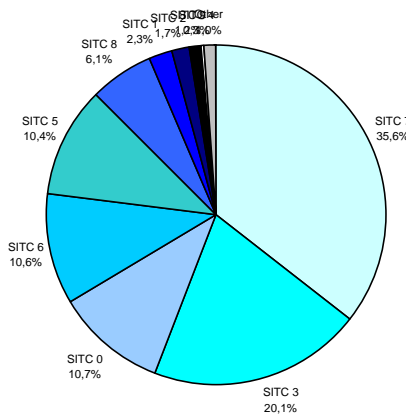
European Union, Exports to... Acp (Excl South Africa)

SITC Codes	SITC Sections	Value (millions of euro)	Share of Total (%)	Share of total EU Exports
TOTAL		54 558	100,0%	3,6%
SITC 7	Machinery and transport equipment	19 450	35,6%	3,0%
SITC 3	Mineral fuels, lubricants and related materials	10 944	20,1%	11,1%
SITC 0	Food and live animals	5 846	10,7%	9,2%
SITC 6	Manufactured goods classified chiefly by material	5 810	10,6%	3,0%
SITC 5	Chemicals and related prod, n.e.s.	5 673	10,4%	2,2%
SITC 8	Miscellaneous manufactured articles	3 301	6,1%	2,1%
SITC 1	Beverages and tobacco	1 234	2,3%	4,9%
SITC 2	Crude materials, inedible, except fuels	908	1,7%	2,2%
SITC 9	Commodities and transactions n.c.e.	650	1,2%	1,5%
SITC 4	Animal and vegetable oils, fats and waxes	189	0,3%	4,9%

European Union, Exports to the World



European Union, Exports to... Acp (Excl South Africa)



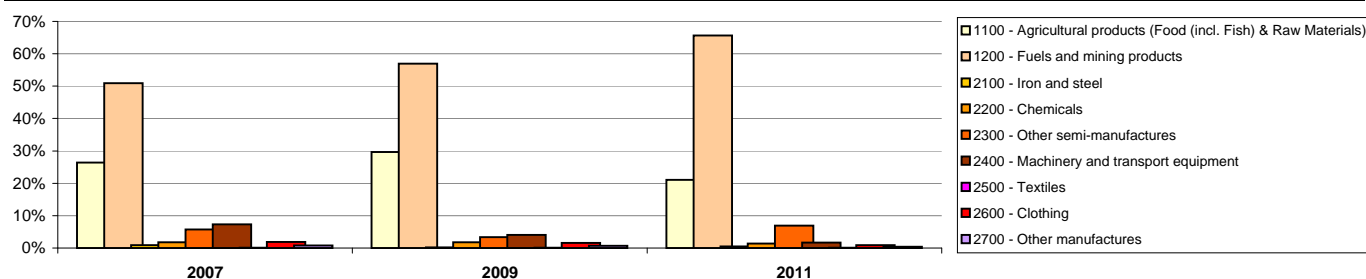
ACP (excl South Africa): Angola, Antigua and Barbuda, Bahamas, Barbados, Belize, Benin, Botswana, Burkina Faso, Burundi, Cameroon, Cape Verde, Central African Republic, Chad, Comoros, Congo, Congo (Dem. Rep.), Cook Islands, Côte d'Ivoire, Cuba, Djibouti, Dominica, Dominican Republic, Equatorial Guinea, Eritrea, Ethiopia, Fiji, Gabon, Gambia, Ghana, Grenada, Guinea, Guinea-Bissau, Guyana, Haiti, Jamaica, Kenya, Kiribati, Lesotho, Liberia, Madagascar, Malawi, Mali, Marshall Islands, Mauritania, Mauritius, Federated States of Micronesia, Mozambique, Namibia, Nauru, Niger, Nigeria, Niue, Palau, Papua New Guinea, Rwanda, São Tomé & Príncipe, Senegal, Seychelles, Sierra Leone, Solomon Islands, Somalia, St Kitts and Nevis, St Lucia, St Vincent & Grenadines, Sudan, Suriname, Swaziland, Tanzania, Timor-Leste, Togo, Tonga, Trinidad & Tobago, Tuvalu, Uganda, Vanuatu, Western Samoa, Zambia, Zimbabwe

* The sums of the individual SITC product categories are less than the totals due to confidentiality reasons.
Source: EUROSTAT (Comext, Statistical regime 4); World excluding Intra-EU trade and European Union: 27 members.

EUROPEAN UNION IMPORTS, BY PRODUCT GROUPING*

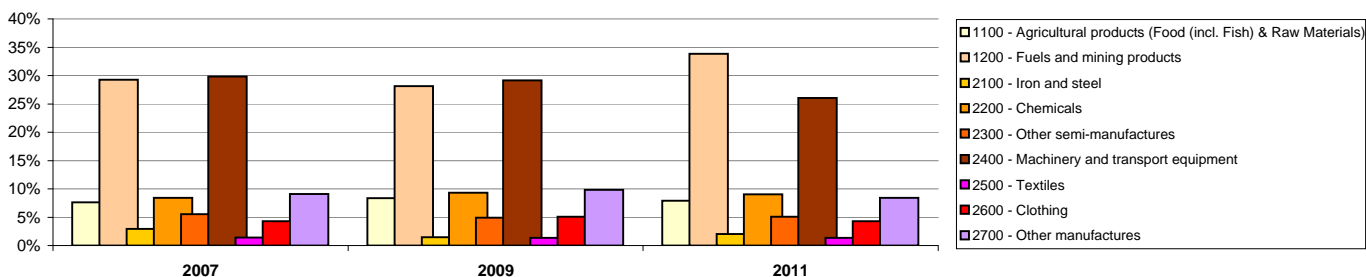
European Union, Imports from... Acp (Excl South Africa)

SITC Rev.3 (UN, WTO/ITS) & AMA/NAMA** (WTO) Product Groups	2007		2009		2011		Share of Partner in EU Imports (2011)
	Millions euro	%	Millions euro	%	Millions euro	%	
0000 - Total	42 875,2	100,0%	38 720,0	100,0%	68 503,9	100,0%	4,1%
1000 - Primary products	33 138,8	77,3%	33 571,3	86,7%	59 379,0	86,7%	8,4%
1100 - Agricultural products (Food (incl. Fish) & Raw Materials)	11 316,7	26,4%	11 502,9	29,7%	14 421,5	21,1%	10,8%
1200 - Fuels and mining products	21 822,1	50,9%	22 068,4	57,0%	44 957,5	65,6%	7,9%
2000 - Manufactures	7 922,9	18,5%	4 574,1	11,8%	8 146,4	11,9%	0,9%
2100 - Iron and steel	383,4	0,9%	69,7	0,2%	327,6	0,5%	1,0%
2200 - Chemicals	768,9	1,8%	696,9	1,8%	955,8	1,4%	0,6%
2300 - Other semi-manufactures	2 451,7	5,7%	1 319,6	3,4%	4 764,5	7,0%	5,6%
2400 - Machinery and transport equipment	3 137,8	7,3%	1 577,5	4,1%	1 171,4	1,7%	0,3%
2410 - Office and telecommunication equipment	92,8	0,2%	63,9	0,2%	50,8	0,1%	0,0%
2420 - Transport equipment	2 814,4	6,6%	1 255,8	3,2%	840,9	1,2%	0,8%
2430 - Other machinery	230,6	0,5%	257,8	0,7%	279,7	0,4%	0,2%
2500 - Textiles	60,9	0,1%	33,3	0,1%	44,5	0,1%	0,2%
2600 - Clothing	790,2	1,8%	614,9	1,6%	594,8	0,9%	0,8%
2700 - Other manufactures	329,9	0,8%	262,1	0,7%	288,0	0,4%	0,2%
3000 - Other products	230,0	0,5%	442,9	1,1%	602,0	0,9%	1,9%
Agricultural Products (AMA)	8 057,5	18,8%	9 158,2	23,7%	11 275,5	16,5%	11,5%
Non-Agricultural Products (NAMA)	33 185,0	77,4%	29 303,2	75,7%	56 617,3	82,6%	3,6%
Other Products	1 632,6	3,8%	258,6	0,7%	611,1	0,9%	3,6%



European Union, Imports from the World (excl. Intra EU)

SITC Rev.3 (UN, WTO/ITS) & AMA/NAMA** (WTO) Product Groups	2007		2009		2011		Average Annual Growth (2007-2011)
	Millions euro	%	Millions euro	%	Millions euro	%	
0000 - Total	1 435 083,2	100,0%	1 207 813,6	100,0%	1 683 931,0	100,0%	4,1%
1000 - Primary products	529 936,9	36,9%	440 812,1	36,5%	703 822,3	41,8%	7,4%
1100 - Agricultural products (Food (incl. Fish) & Raw Materials)	109 698,1	7,6%	101 226,1	8,4%	133 557,5	7,9%	5,0%
1200 - Fuels and mining products	420 238,8	29,3%	339 586,0	28,1%	570 264,8	33,9%	7,9%
2000 - Manufactures	883 517,1	61,6%	738 564,5	61,1%	946 752,9	56,2%	1,7%
2100 - Iron and steel	42 149,2	2,9%	17 917,5	1,5%	34 113,7	2,0%	-5,2%
2200 - Chemicals	120 706,1	8,4%	112 463,8	9,3%	152 490,4	9,1%	6,0%
2300 - Other semi-manufactures	79 424,1	5,5%	59 437,3	4,9%	85 216,3	5,1%	1,8%
2400 - Machinery and transport equipment	428 425,0	29,9%	352 429,5	29,2%	438 645,0	26,0%	0,6%
2410 - Office and telecommunication equipment	175 572,7	12,2%	143 363,3	11,9%	178 401,8	10,6%	0,4%
2420 - Transport equipment	111 326,6	7,8%	92 670,9	7,7%	102 056,2	6,1%	-2,2%
2430 - Other machinery	141 525,7	9,9%	116 395,3	9,6%	158 187,0	9,4%	2,8%
2500 - Textiles	20 027,3	1,4%	16 274,2	1,3%	22 419,7	1,3%	2,9%
2600 - Clothing	61 846,3	4,3%	61 266,3	5,1%	72 425,9	4,3%	4,0%
2700 - Other manufactures	130 939,1	9,1%	118 775,9	9,8%	141 441,9	8,4%	1,9%
3000 - Other products	21 632,6	1,5%	28 440,9	2,4%	31 005,9	1,8%	9,4%
Agricultural Products (AMA)	77 818,4	5,4%	77 070,8	6,4%	98 148,4	5,8%	6,0%
Non-Agricultural Products (NAMA)	1 343 383,5	93,6%	1 116 421,3	92,4%	1 569 036,2	93,2%	4,0%
Other Products	13 881,3	1,0%	14 321,6	1,2%	16 746,5	1,0%	4,8%



ACP (excl South Africa): Angola, Antigua and Barbuda, Bahamas, Barbados, Belize, Benin, Botswana, Burkina Faso, Burundi, Cameroon, Cape Verde, Central African Republic, Chad, Comoros, Congo, Congo (Dem. Rep.), Cook Islands, Côte d'Ivoire, Cuba, Djibouti, Dominica, Dominican Republic, Equatorial Guinea, Eritrea, Ethiopia, Fiji, Gabon, Gambia, Ghana, Grenada, Guinea, Guinea-Bissau, Guyana, Haiti, Jamaica, Kenya, Kiribati, Lesotho, Liberia, Madagascar, Malawi, Mali, Marshall Islands, Mauritania, Mauritius, Federated States of Micronesia, Mozambique, Namibia, Nauru, Niger, Nigeria, Niue, Palau, Papua New Guinea, Rwanda, São Tomé & Príncipe, Senegal, Seychelles, Sierra Leone, Solomon Islands, Somalia, St Kitts and Nevis, St Lucia, St Vincent & Grenadines, Sudan, Suriname, Swaziland, Tanzania, Timor-Leste, Togo, Tonga, Trinidad & Tobago, Tuvalu, Uganda, Vanuatu, Western Samoa, Zambia, Zimbabwe

SITC Rev. 3: 1000 - Primary products: 0, 1, 2, 3, 4, 68; 1100 - Agricultural products (Food (incl. Fish) & Raw Materials): 0, 1, 2, 4, excl. 27, excl. 28; 1200 - Fuels and mining products: 3, 27, 28, 68; 2000 - Manufactures: 5, 6, 7, 8, excl. 68, excl. 891; 2100 - Iron and steel: 67; 2200 - Chemicals: 5; 2300 - Other semi-manufactures: 61, 62, 63, 64, 66, 69; 2400 - Machinery and transport equipment: 7; 2410 - Office and telecommunication equipment: 75, 76, 77; 2420 - Transport equipment: 78, 79, 713, 7783; 2430 - Other machinery: 71, 72, 73, 74, 77, excl. 713, excl. 776, excl. 7783; 2500 - Textiles: 65; 2600 - Clothing: 84; 2700 - Other manufactures: 81, 82, 83, 85, 87, 88, 89, excl. 891; 3000 - Other products: 9, 891.

* The sums of the individual SITC product categories are less than the totals due to confidentiality reasons.

** Based on: http://www.wto.org/english/tratop_e/markacc_e/namachairtxt_dec08_e.pdf

Source: EUROSTAT (Comext, Statistical regime 4); World excluding Intra-EU trade and European Union: 27 members.

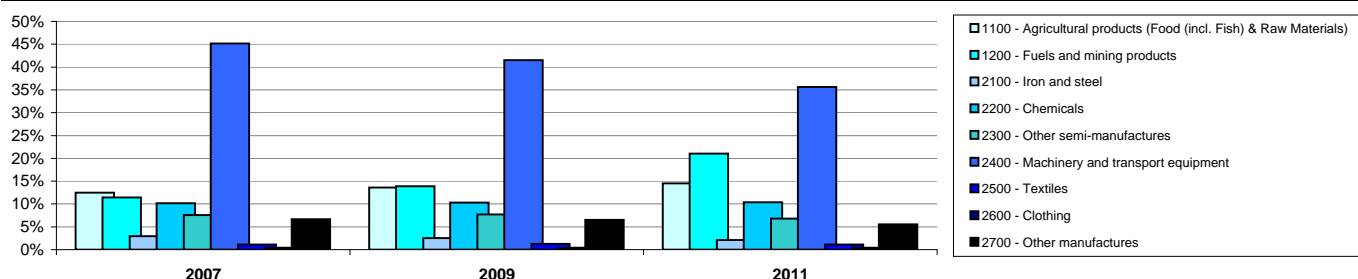
DG TRADE

21-Mar-12

EUROPEAN UNION EXPORTS, BY PRODUCT GROUPING*

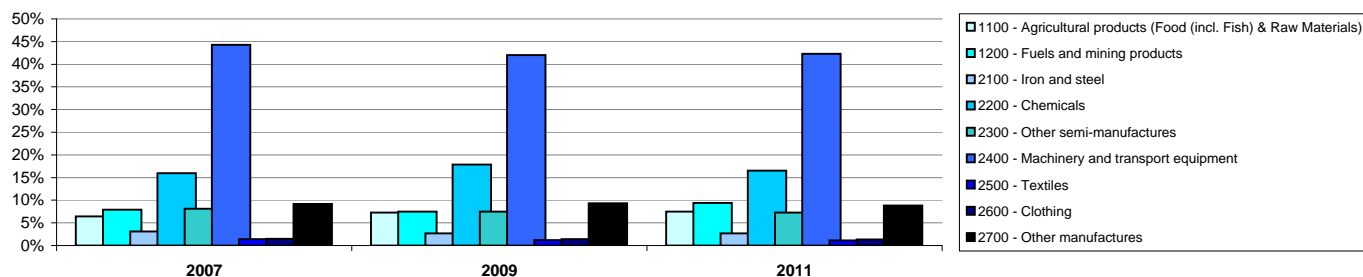
European Union, Exports to... Acp (Excl South Africa)

SITC Rev.3 (UN, WTO/ITS) & AMA/NAMA** (WTO) Product Groups	2007		2009		2011		Share of Partner in EU Exports (2011)
	Millions euro	%	Millions euro	%	Millions euro	%	
0000 - Total	41 476,2	100,0%	41 338,8	100,0%	54 558,0	100,0%	3,6%
1000 - Primary products	9 919,3	23,9%	11 365,2	27,5%	19 382,7	35,5%	7,5%
1100 - Agricultural products (Food (incl. Fish) & Raw Materials)	5 175,2	12,5%	5 629,2	13,6%	7 917,8	14,5%	6,9%
1200 - Fuels and mining products	4 744,1	11,4%	5 736,0	13,9%	11 464,9	21,0%	8,0%
2000 - Manufactures	30 732,8	74,1%	29 074,5	70,3%	33 938,6	62,2%	2,8%
2100 - Iron and steel	1 222,8	2,9%	1 032,6	2,5%	1 157,6	2,1%	2,8%
2200 - Chemicals	4 228,5	10,2%	4 269,5	10,3%	5 672,8	10,4%	2,2%
2300 - Other semi-manufactures	3 141,1	7,6%	3 193,9	7,7%	3 723,6	6,8%	3,3%
2400 - Machinery and transport equipment	18 736,9	45,2%	17 158,8	41,5%	19 449,5	35,6%	3,0%
2410 - Office and telecommunication equipment	3 268,5	7,9%	2 616,4	6,3%	3 508,6	6,4%	4,4%
2420 - Transport equipment	6 967,5	16,8%	5 386,3	13,0%	5 778,6	10,6%	2,4%
2430 - Other machinery	8 413,6	20,3%	9 018,7	21,8%	10 062,8	18,4%	3,1%
2500 - Textiles	467,1	1,1%	514,3	1,2%	628,1	1,2%	3,7%
2600 - Clothing	164,3	0,4%	174,1	0,4%	220,8	0,4%	1,1%
2700 - Other manufactures	2 749,8	6,6%	2 690,1	6,5%	3 018,6	5,5%	2,2%
3000 - Other products	449,3	1,1%	522,3	1,3%	683,8	1,3%	1,5%
Agricultural Products (AMA)	4 608,8	11,1%	5 088,7	12,3%	7 266,8	13,3%	6,9%
Non-Agricultural Products (NAMA)	36 219,5	87,3%	35 578,6	86,1%	46 358,4	85,0%	3,3%
Other Products	647,9	1,6%	671,4	1,6%	932,8	1,7%	5,5%



European Union, Exports to the World (excl. Intra EU)

SITC Rev.3 (UN, WTO/ITS) & AMA/NAMA** (WTO) Product Groups	2007		2009		2011		Average Annual Growth (2007-2011)
	Millions euro	%	Millions euro	%	Millions euro	%	
0000 - Total	1 240 983,7	100,0%	1 098 066,1	100,0%	1 531 122,0	100,0%	5,4%
1000 - Primary products	178 179,5	14,4%	161 658,6	14,7%	258 190,3	16,9%	9,7%
1100 - Agricultural products (Food (incl. Fish) & Raw Materials)	80 069,5	6,5%	79 800,5	7,3%	114 248,6	7,5%	9,3%
1200 - Fuels and mining products	98 110,0	7,9%	81 858,1	7,5%	143 941,7	9,4%	10,1%
2000 - Manufactures	1 036 250,5	83,5%	901 576,4	82,1%	1 226 210,3	80,1%	4,3%
2100 - Iron and steel	38 276,0	3,1%	29 591,7	2,7%	40 618,6	2,7%	1,5%
2200 - Chemicals	197 917,2	15,9%	196 389,5	17,9%	253 036,9	16,5%	6,3%
2300 - Other semi-manufactures	100 693,7	8,1%	82 183,0	7,5%	111 746,1	7,3%	2,6%
2400 - Machinery and transport equipment	549 801,0	44,3%	461 753,1	42,1%	647 511,0	42,3%	4,2%
2410 - Office and telecommunication equipment	86 538,6	7,0%	65 015,0	5,9%	80 437,8	5,3%	-1,8%
2420 - Transport equipment	191 151,4	15,4%	151 082,0	13,8%	243 238,5	15,9%	6,2%
2430 - Other machinery	269 005,0	21,7%	242 376,9	22,1%	321 428,0	21,0%	4,6%
2500 - Textiles	17 372,0	1,4%	13 545,1	1,2%	17 086,8	1,1%	-0,4%
2600 - Clothing	18 186,2	1,5%	15 742,3	1,4%	20 287,9	1,3%	2,8%
2700 - Other manufactures	113 696,6	9,2%	101 975,0	9,3%	135 388,4	8,8%	4,5%
3000 - Other products	26 559,2	2,1%	34 837,5	3,2%	45 494,0	3,0%	14,4%
Agricultural Products (AMA)	73 442,8	5,9%	74 571,1	6,8%	105 225,9	6,9%	9,4%
Non-Agricultural Products (NAMA)	1 155 250,0	93,1%	1 008 702,4	91,9%	1 409 039,9	92,0%	5,1%
Other Products	12 291,0	1,0%	14 792,6	1,3%	16 856,2	1,1%	8,2%



ACP (excl South Africa): Angola, Antigua and Barbuda, Bahamas, Barbados, Belize, Benin, Botswana, Burkina Faso, Burundi, Cameroon, Cape Verde, Central African Republic, Chad, Comoros, Congo, Congo (Dem. Rep.), Cook Islands, Côte d'Ivoire, Cuba, Djibouti, Dominica, Dominican Republic, Equatorial Guinea, Eritrea, Ethiopia, Fiji, Gabon, Gambia, Ghana, Grenada, Guinea, Guinea-Bissau, Guyana, Haiti, Jamaica, Kenya, Kiribati, Lesotho, Liberia, Madagascar, Malawi, Mali, Marshall Islands, Mauritania, Mauritius, Federated States of Micronesia, Mozambique, Namibia, Nauru, Niger, Nigeria, Niue, Palau, Papua New Guinea, Rwanda, São Tomé & Príncipe, Senegal, Seychelles, Sierra Leone, Solomon Islands, Somalia, St Kitts and Nevis, St Lucia, St Vincent & Grenadines, Sudan, Suriname, Swaziland, Tanzania, Timor-Leste, Togo, Tonga, Trinidad & Tobago, Tuvalu, Uganda, Vanuatu, Western Samoa, Zambia, Zimbabwe

SITC Rev. 3: 1000 - Primary products: 0, 1, 2, 3, 4, 68; 1100 - Agricultural products (Food (incl. Fish) & Raw Materials): 0, 1, 2, 4, excl. 27, excl. 28; 1200 - Fuels and mining products: 3, 27, 28, 68; 2000 - Manufactures: 5, 6, 7, 8, excl. 68, excl. 891; 2100 - Iron and steel: 67; 2200 - Chemicals: 5; 2300 - Other semi-manufactures: 61, 62, 63, 64, 66, 69; 2400 - Machinery and transport equipment: 7; 2410 - Office and telecommunication equipment: 75, 76, 77; 2420 - Transport equipment: 78, 79, 713, 7783; 2430 - Other machinery: 71, 72, 73, 74, 77, excl. 713, excl. 776, excl. 7783; 2500 - Textiles: 65; 2600 - Clothing: 84; 2700 - Other manufactures: 81, 82, 83, 85, 87, 88, 89, excl. 891; 3000 - Other products: 9, 891.

* The sums of the individual SITC product categories are less than the totals due to confidentiality reasons.

** Based on: http://www.wto.org/english/tratop_e/markacc_e/namachairtxt_dec08_e.pdf

Source: EUROSTAT (Comext, Statistical regime 4); World excluding Intra-EU trade and European Union: 27 members.

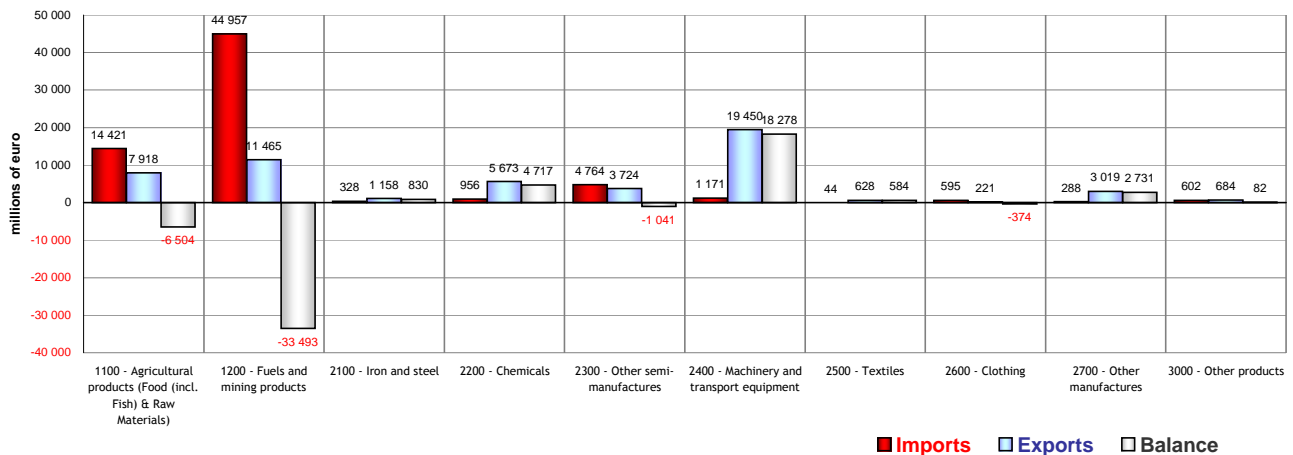
DG TRADE

21-Mar-12

RANK OF ACP (EXCL SOUTH AFRICA) IN EUROPEAN UNION TRADE (2011)*

SITC Rev.3 (UN, WTO/ITS) & AMA/NAMA** (WTO) Product Groups	EU Imports				EU Exports				EU Balance
	Rank	Value (in millions of euro)	Share of Product in Total (%)	Share of Partner in EU Imports (%)	Rank	Value (in millions of euro)	Share of Product in Total (%)	Share of Partner in EU Exports (%)	Value (in millions of euro)
TOTAL	-	68 503,9	100,0%	4,1%	-	54 558,0	100,0%	3,6%	-13 945,9
1000 - Primary products	-	59 379,0	86,7%	8,4%	-	19 382,7	35,5%	7,5%	-39 996,3
1100 - Agricultural products (Food (incl. Fish) & Raw Materials)	-	14 421,5	21,1%	10,8%	-	7 917,8	14,5%	6,9%	-6 503,7
1110 - Food	-	12 012,1	17,5%	11,2%	-	7 273,2	13,3%	7,8%	-4 738,9
1111 - Fish	-	1 777,9	2,6%	9,7%	-	447,0	0,8%	13,3%	-1 330,9
1112 - Other food products and live animals	-	10 234,1	14,9%	11,6%	-	6 826,2	12,5%	7,6%	-3 408,0
1120 - Raw materials	-	2 409,4	3,5%	9,1%	-	644,6	1,2%	3,1%	-1 764,8
1200 - Fuels and mining products	-	44 957,5	65,6%	7,9%	-	11 464,9	21,0%	8,0%	-33 492,6
1210 - Ores and other minerals	-	1 964,5	2,9%	4,6%	-	259,7	0,5%	1,3%	-1 704,8
1220 - Fuels	-	40 798,6	59,6%	8,4%	-	10 943,8	20,1%	11,1%	-29 854,8
1221 - Petroleum and petroleum products	-	35 677,7	52,1%	9,7%	-	10 814,9	19,8%	11,8%	-24 862,9
1222 - Other fuels	-	5 120,9	7,5%	4,3%	-	129,0	0,2%	1,9%	-4 991,9
1230 - Non ferrous metals	-	2 194,4	3,2%	5,2%	-	261,4	0,5%	1,0%	-1 933,0
2000 - Manufactures	-	8 146,4	11,9%	0,9%	-	33 938,6	62,2%	2,8%	25 792,1
2100 - Iron and steel	-	327,6	0,5%	1,0%	-	1 157,6	2,1%	2,8%	830,1
2200 - Chemicals	-	955,8	1,4%	0,6%	-	5 672,8	10,4%	2,2%	4 717,0
2210 - Pharmaceuticals	-	84,5	0,1%	0,2%	-	2 160,3	4,0%	2,1%	2 075,9
2220 - Plastics	-	10,6	0,0%	0,1%	-	773,6	1,4%	2,2%	763,0
2230 - Other chemicals	-	860,7	1,3%	1,1%	-	2 738,9	5,0%	2,3%	1 878,2
2300 - Other semi-manufactures	-	4 764,5	7,0%	5,6%	-	3 723,6	6,8%	3,3%	-1 040,8
2400 - Machinery and transport equipment	-	1 171,4	1,7%	0,3%	-	19 449,5	35,6%	3,0%	18 278,2
2410 - Office and telecommunication equipment	-	50,8	0,1%	0,0%	-	3 508,6	6,4%	4,4%	3 457,8
2411 - Electronic data processing and office equipment	-	14,0	0,0%	0,0%	-	1 064,0	2,0%	4,3%	1 049,9
2412 - Telecommunications equipment	-	33,2	0,0%	0,0%	-	2 386,0	4,4%	5,9%	2 352,8
2413 - Integrated circuits and electronic components	-	3,6	0,0%	0,0%	-	58,6	0,1%	0,4%	55,0
2420 - Transport equipment	-	840,9	1,2%	0,8%	-	5 778,6	10,6%	2,4%	4 937,7
2421 - Automotive products	-	10,9	0,0%	0,0%	-	2 980,1	5,5%	1,8%	2 969,2
2422 - Other transport equipment	-	830,0	1,2%	1,6%	-	2 798,6	5,1%	3,5%	1 968,6
2430 - Other machinery	-	279,7	0,4%	0,2%	-	10 062,8	18,4%	3,1%	9 783,2
2431 - Power generating machinery	-	130,2	0,2%	0,4%	-	1 650,9	3,0%	3,6%	1 520,6
2432 - Non electrical machinery	-	88,5	0,1%	0,1%	-	6 567,3	12,0%	3,2%	6 478,7
2433 - Electrical machinery	-	60,9	0,1%	0,1%	-	1 844,7	3,4%	2,6%	1 783,8
2500 - Textiles	-	44,5	0,1%	0,2%	-	628,1	1,2%	3,7%	583,6
2600 - Clothing	-	594,8	0,9%	0,8%	-	220,8	0,4%	1,1%	-374,1
2700 - Other manufactures	-	288,0	0,4%	0,2%	-	3 018,6	5,5%	2,2%	2 730,6
2710 - Personal and household goods	-	58,0	0,1%	0,2%	-	523,9	1,0%	2,1%	466,0
2720 - Scientific and controlling instruments	-	93,7	0,1%	0,3%	-	846,6	1,6%	1,9%	752,9
2730 - Miscellaneous manufactures	-	136,4	0,2%	0,2%	-	1 648,1	3,0%	2,5%	1 511,7
3000 - Other products	-	602,0	0,9%	1,9%	-	683,8	1,3%	1,5%	81,8
Agricultural Products (AMA)	-	11 275,5	16,5%	11,5%	-	7 266,8	13,3%	6,9%	-4 008,7
Non-Agricultural Products (NAMA)	-	56 617,3	82,6%	3,6%	-	46 358,4	85,0%	3,3%	-10 258,9
Other Products	-	611,1	0,9%	3,6%	-	932,8	1,7%	5,5%	321,7

EU Trade with... ACP (excl South Africa)



ACP (excl South Africa): Angola, Antigua and Barbuda, Bahamas, Barbados, Belize, Benin, Botswana, Burkina Faso, Burundi, Cameroon, Cape Verde, Central African Republic, Chad, Comoros, Congo, Congo (Dem. Rep.), Cook Islands, Côte d'Ivoire, Cuba, Djibouti, Dominica, Dominican Republic, Equatorial Guinea, Eritrea, Ethiopia, Fiji, Gabon, Gambia, Ghana, Grenada, Guinea, Guinea-Bissau, Guyana, Haiti, Jamaica, Kenya, Kiribati, Lesotho, Liberia, Madagascar, Malawi, Mali, Marshall Islands, Mauritania, Mauritius, Federated States of Micronesia, Mozambique, Namibia, Nauru, Niger, Nigeria, Niue, Palau, Papua New Guinea, Rwanda, São Tomé & Príncipe, Senegal, Seychelles, Sierra Leone, Solomon Islands, Somalia, St Kitts and Nevis, St Lucia, St Vincent & Grenadines, Sudan, Suriname, Swaziland, Tanzania, Timor-Leste, Togo, Tonga, Trinidad & Tobago, Tuvalu, Uganda, Vanuatu, Western Samoa, Zambia, Zimbabwe

1000 - Primary products: 0, 1, 2, 3, 4, 68; 1100 - Agricultural products (Food (incl. Fish) & Raw Materials): 0, 1, 2, 4, excl. 27, excl. 28; 1110 - Food: 0, 1, 4, 22; 1111 - Fish: 03; 1112 - Other food products and live animals: 0, 1, 4, 22, excl. 03; 1120 - Raw materials: 21, 23, 24, 25, 26, 29; 1200 - Fuels and mining products: 3, 27, 28, 68; 1210 - Ores and other minerals: 27, 28; 1220 - Fuels: 3; 1221 - Petroleum and petroleum products: 33; 1222 - Other fuels: 3 excl. 33; 1230 - Non ferrous metals: 68.

2000 - Manufactures: 5, 6, 7, 8, excl. 68, excl. 89; 2100 - Iron and steel: 67; 2200 - Chemicals: 54; 2210 - Pharmaceuticals: 57, 58; 2220 - Other chemicals: 51, 52, 53, 55, 56, 59; 2300 - Other semi-manufactures: 61, 62, 63, 64, 66, 69; 2400 - Machinery and transport equipment: 7; 2410 - Office and telecommunication equipment: 75, 76, 77; 2411 - Electronic data processing and office equipment: 75; 2412 - Telecommunications equipment: 76; 2413 - Integrated circuits and electronic components: 77; 2420 - Transport equipment: 78, 79, 713, 778; 2421 - Automotive products: 781, 782, 783, 784, 7132, 778; 2422 - Other transport equipment: 79, 713, 785, 786, excl. 7132; 2430 - Other machinery: 71, 72, 73, 74, 77, excl. 713, excl. 776, excl. 778; 2431 - Power generating machinery: 71, excl. 713; 2432 - Non electrical machinery: 72, 73, 74; 2433 - Electrical machinery: 77, excl. 776, excl. 778; 2500 - Textiles: 65; 2600 - Clothing: 84; 2700 - Other manufactures: 81, 82, 83, 85, 87, 88, 89, excl. 891; 2710 - Personal and household goods: 82, 83, 85; 2720 - Scientific and controlling instruments: 87; 2730 - Miscellaneous manufactures: 81, 88, 89, excl. 891.

3000 - Other products: 9, 891.

* The sums of the individual SITC product categories are less than the totals due to confidentiality reasons.

** Based on: http://www.wto.org/english/tratop_e/markacc_e/namachairtxt_dec08_e.pdf

Source: EUROSTAT (Comext, Statistical regime 4); Share by products in EU 27 Total Trade excluding Intra-EU trade.

DG TRADE

21-Mar-12

EU TRADE WITH THE WORLD AND EU TRADE WITH ACP (EXCL SOUTH AFRICA) (2011)*

(Ranking by Trade Flows in 2011)

EU Imports from...				
TDC Sections	World	ACP (excl South Africa)		
		Millions of euro	Share of Total	Share of total EU Imports
TOTAL	1 683 931	68 504	100,0%	4,1%
TDC 05	518 507	42 299	61,7%	8,2%
TDC 04	38 451	7 392	10,8%	19,2%
TDC 14	46 959	4 627	6,8%	9,9%
TDC 02	43 553	3 683	5,4%	8,5%
TDC 15	105 402	2 788	4,1%	2,6%
TDC 01	21 283	1 130	1,6%	5,3%
TDC 06	136 934	1 090	1,6%	0,8%
TDC 07	48 752	877	1,3%	1,8%
TDC 09	10 536	836	1,2%	7,9%
TDC 17	90 891	834	1,2%	0,9%
TDC 11	93 060	766	1,1%	0,8%
TDC 03	8 845	663	1,0%	7,5%
TDC 08	12 978	333	0,5%	2,6%
TDC 16	350 449	321	0,5%	0,1%
TDC 18	54 851	150	0,2%	0,3%
TDC 12	17 595	49	0,1%	0,3%
TDC 20	36 970	26	0,0%	0,1%
TDC 10	16 265	11	0,0%	0,1%
TDC 21	2 947	10	0,0%	0,3%
TDC 13	10 889	7	0,0%	0,1%
TDC 19	1 067	0	0,0%	0,0%

EU Exports to...				
TDC Sections	World	ACP (excl South Africa)		
		Millions of euro	Share of Total	Share of total EU Exports
TOTAL	1 531 122	54 558	100,0%	3,6%
TDC 16	425 431	14 299	26,2%	3,4%
TDC 05	104 786	11 382	20,9%	10,9%
TDC 17	224 819	5 264	9,6%	2,3%
TDC 06	223 961	5 010	9,2%	2,2%
TDC 04	53 583	3 276	6,0%	6,1%
TDC 15	109 013	3 207	5,9%	2,9%
TDC 01	21 813	2 042	3,7%	9,4%
TDC 02	20 493	1 837	3,4%	9,0%
TDC 07	59 934	1 539	2,8%	2,6%
TDC 11	38 722	1 317	2,4%	3,4%
TDC 10	30 249	1 202	2,2%	4,0%
TDC 18	69 879	1 075	2,0%	1,5%
TDC 20	23 413	756	1,4%	3,2%
TDC 13	17 106	552	1,0%	3,2%
TDC 03	3 946	258	0,5%	6,5%
TDC 14	49 608	248	0,5%	0,5%
TDC 12	7 072	129	0,2%	1,8%
TDC 09	10 093	124	0,2%	1,2%
TDC 08	13 408	69	0,1%	0,5%
TDC 19	2 326	34	0,1%	1,5%
TDC 21	4 611	5	0,0%	0,1%

EU Balance with ...		
TDC Sections	World	ACP (excl South Africa)
TOTAL	-152 809	-13 946
TDC 16	74 982	13 978
TDC 17	133 928	4 430
TDC 06	87 026	3 920
TDC 10	13 985	1 191
TDC 18	15 028	925
TDC 01	530	911
TDC 20	-13 557	730
TDC 07	11 181	662
TDC 11	-54 338	551
TDC 13	6 217	545
TDC 15	3 611	420
TDC 12	-10 522	80
TDC 19	1 259	34
TDC 21	1 664	-5
TDC 08	430	-265
TDC 03	-4 899	-405
TDC 09	-444	-712
TDC 02	-23 060	-1 845
TDC 04	15 132	-4 116
TDC 14	2 650	-4 378
TDC 05	-413 721	-30 917

TDC sections (Harmonized System):

TDC 01	Ch.01-05	Live animals; animal products	TDC 11	Ch.50-63	Textiles and textile articles
TDC 02	Ch.06-14	Vegetable products	TDC 12	Ch. 64-67	Footwear, headgear, umbrellas, sun umbrellas, walking-sticks...
TDC 03	Ch.15	Animal or vegetable fats and oils and their cleavage products...	TDC 13	Ch.68-70	Articles of stone, plaster, cement, asbestos, mica or similar material...
TDC 04	Ch.16-24	Prepared foodstuffs; beverages, spirits and vinegar; tobacco...	TDC 14	Ch.71	Natural or cultured pearls, precious or semi-precious stones...
TDC 05	Ch.25-27	Mineral Products	TDC 15	Ch.72-83	Base metals and articles of base metal
TDC 06	Ch.28-38	Products of the chemical or allied industries	TDC 16	Ch.84-85	Machinery and mechanical appliances; electrical equipment...
TDC 07	Ch.39-40	Plastics and articles thereof; rubber and articles thereof	TDC 17	Ch.86-89	Vehicles, aircraft, vessels and associated transport equipment
TDC 08	Ch.41-43	Raw hides and skins, leather, furskins and articles thereof...	TDC 18	Ch.90-92	Optical, photographic, cinematographic, measuring, checking, precision...
TDC 09	Ch.44-46	Wood and articles of wood; wood charcoal; cork and articles of cork...	TDC 19	Ch. 93	Arms and ammunition; parts and accessories thereof
TDC 10	Ch.47-49	Pulp of wood or of other fibrous cellulosic material; paper or paperboard...	TDC 20	Ch.94-96	Miscellaneous manufactured articles
			TDC 21	Ch.97	Works of art, collectors' pieces and antiques

* The sums of the individual TDC categories are less than the totals due to confidentiality reasons.

Source: EUROSTAT (Comext, Statistical regime 4); World excluding Intra-EU trade and European Union: 27 members.